

To install the UB connection profile "eduroam" on your iPad device, you can use one of the following two solutions:

- install the "Eduroam CAT" or "Geteduroam" application. Both methods are described in this tutorial.

Check compatibility of your device with one of these two at: [eduroam Apps](#).



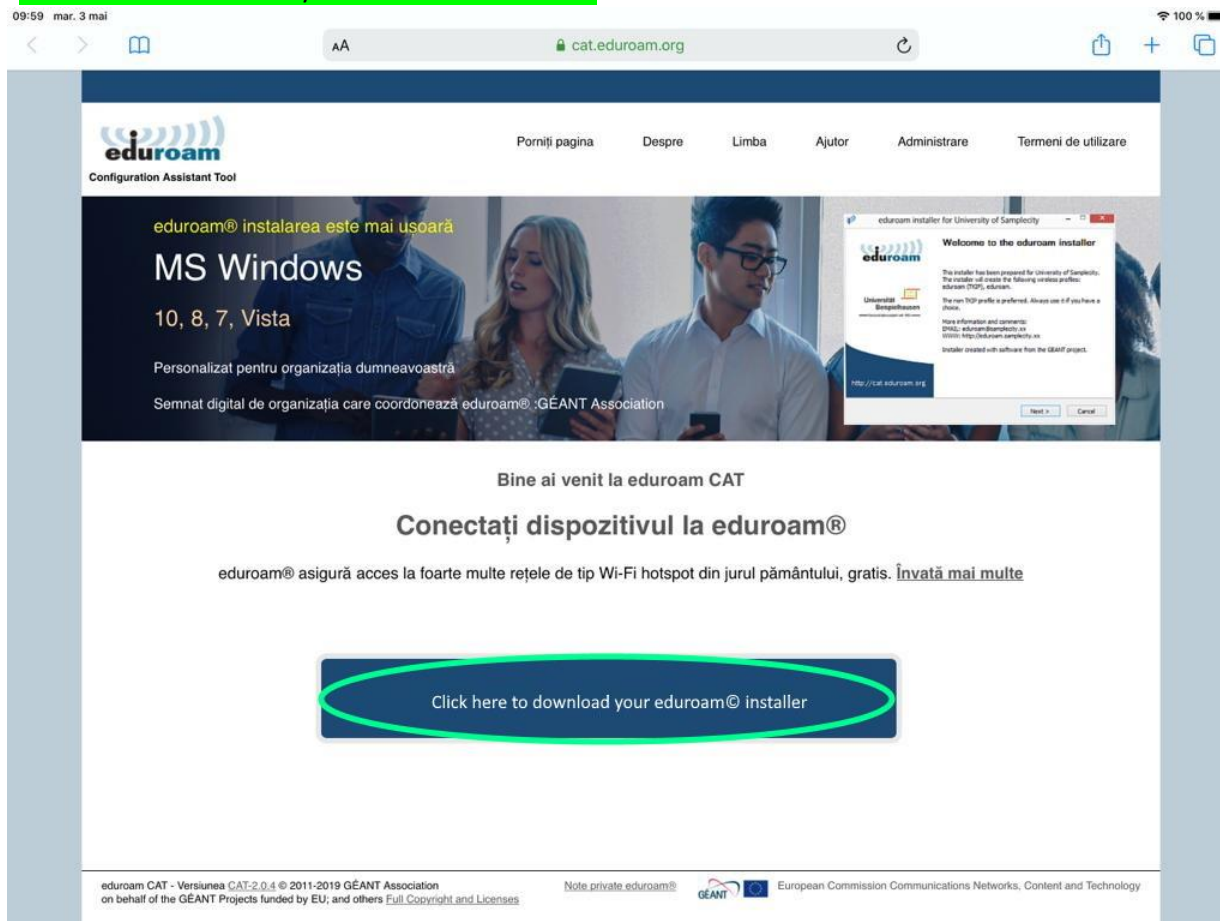
[Eduroam CAT](#)

*You can jump on step 3 (pag. 2) accessing :



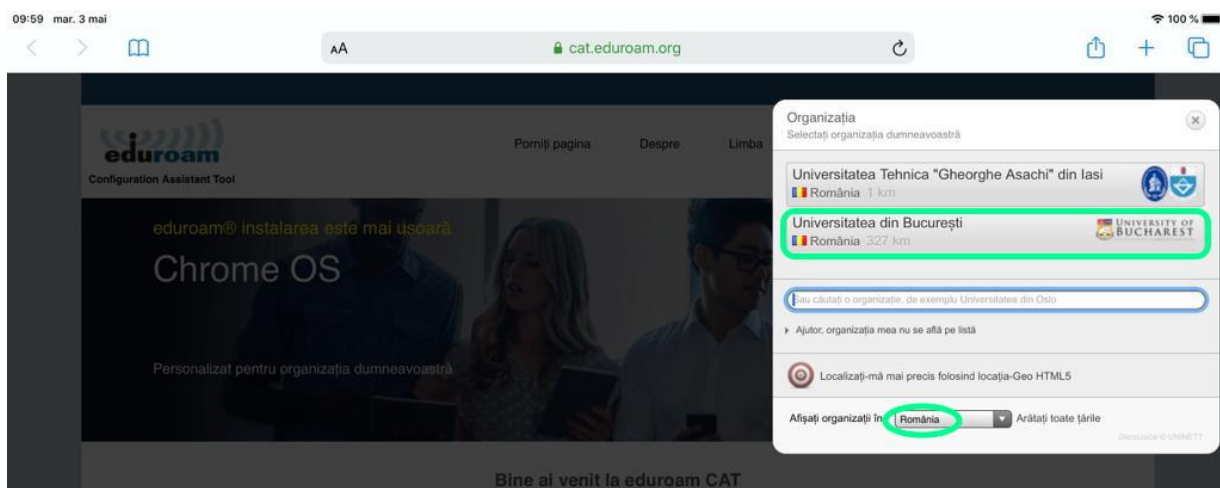
1. Access from browser (SAFARI!)  cat.eduroam.org and in the open window click on the button:

"Click here to download your eduroam® installer".



2. A "pop-up" window will be displayed for selecting the institution for which we want to install the profile.

The UB installation kit can be found in the displayed list if we enter the keywords "University of Bucharest" or manually selecting UB button from the list, after we select the country - Romania.



3. The platform provides the preconfigured "Apple device" kit for download. Click on it and download it locally.

10:00 mar. 3 mai

AA cat.eduroam.org

eduroam Configuration Assistant Tool

Universitatea din București

Porniți pagina Despre Limba Ajutor Administrare Termeni de utilizare

[selectati altul](#)

Dacă o sa mai întâlniți probleme, atunci puteți obține asistență de la organizația dumneavoastră la:
WWW: <https://unibuc.ro/eduroam>
e-mail: eduroam@unibuc.ro
Această înregistrare a fost actualizată : 2022-04-16 13:21:34

UNIVERSITY OF BUCHAREST

Descărcați programul dumneavoastră de instalare eduroam®
Apple device

Alegeți alt program de instalare pentru a descărca

eduroam CAT - Versiunea CAT-2.0.4 © 2011-2019 GÉANT Association on behalf of the GÉANT Projects funded by EU, and others [Full Copyright and Licenses](#) Note private eduroam® GÉANT European Commission Communications Networks, Content and Technology

4. You must allow the profile to be downloaded ("Allow").

10:00 mar. 3 mai

AA cat.eduroam.org

eduroam Configuration Assistant Tool

Universitatea din București

Porniți pagina Despre Limba Ajutor Administrare Termeni de utilizare

[selectati altul](#)

Dacă o sa mai întâlniți probleme, atunci puteți obține asistență de la organizația dumneavoastră la:
WWW: <https://unibuc.ro/eduroam>
e-mail: eduroam@unibuc.ro
Această înregistrare a fost actualizată : 2022-04-16 13:21:34

UNIVERSITY OF BUCHAREST

Bine ați venit la bordul eduroam® comunității de utilizatori!

Descărcarea ar trebui să înceapă curând. În caz că apare o problemă cu descărcarea automată vă rog să folosiți direct această adresă.

Stimate utilizator din Universitatea din București,

Am vrea sa vă spunem bine ați venit printre milioanele de universități, centre de cercetare și alte locuri de pe glob.

Acum ca ați descărcat și instalat clientul configurator, tot introduceți datele (acesta este un nume sofisticat pentru

Acest site web încearcă să descarce un profil de configurare. Doriți să permiteți aceasta?

Ignore Allow

Internet la foarte multe

ereea dumneavoastră si să vă

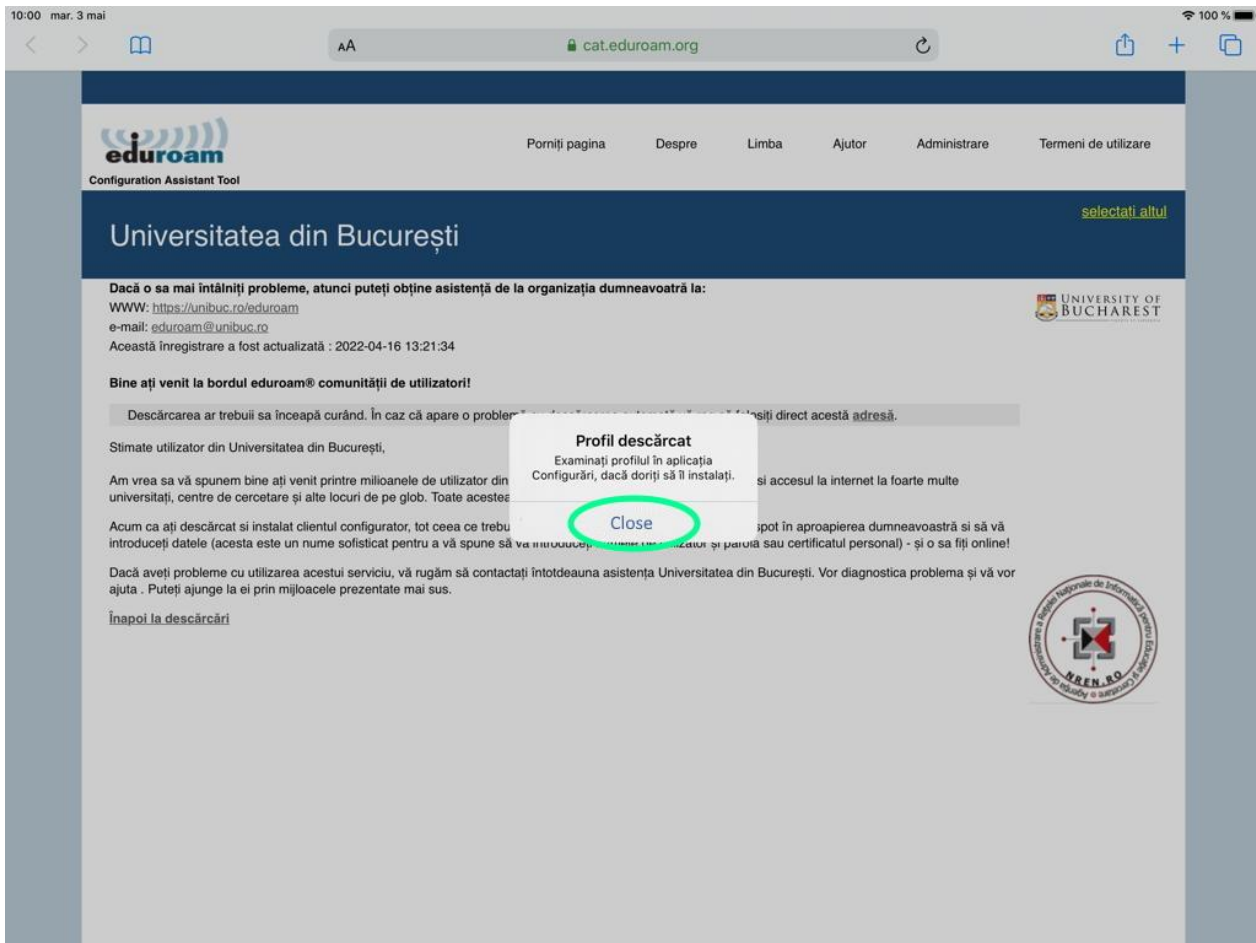
ul personal) - și o sa fiți online!


Dacă aveți probleme cu utilizarea acestui serviciu, vă rugăm să contactați întotdeauna asistența Universitatea din București. Vor diagnostica problema și vă vor ajuta . Puteți ajunge la ei prin mijloacele prezentate mai sus.

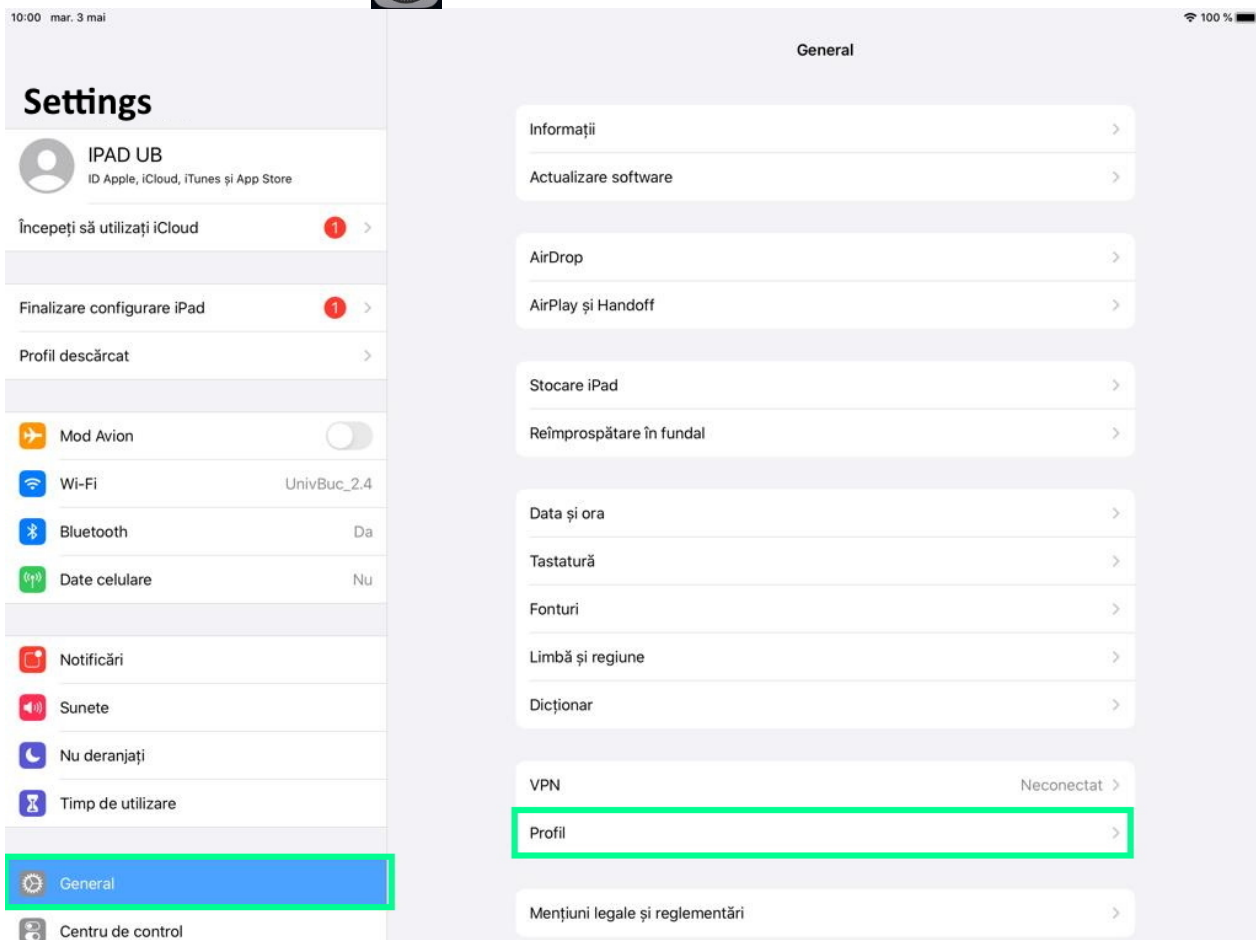
Înapoi la descărcări

AREN.RO

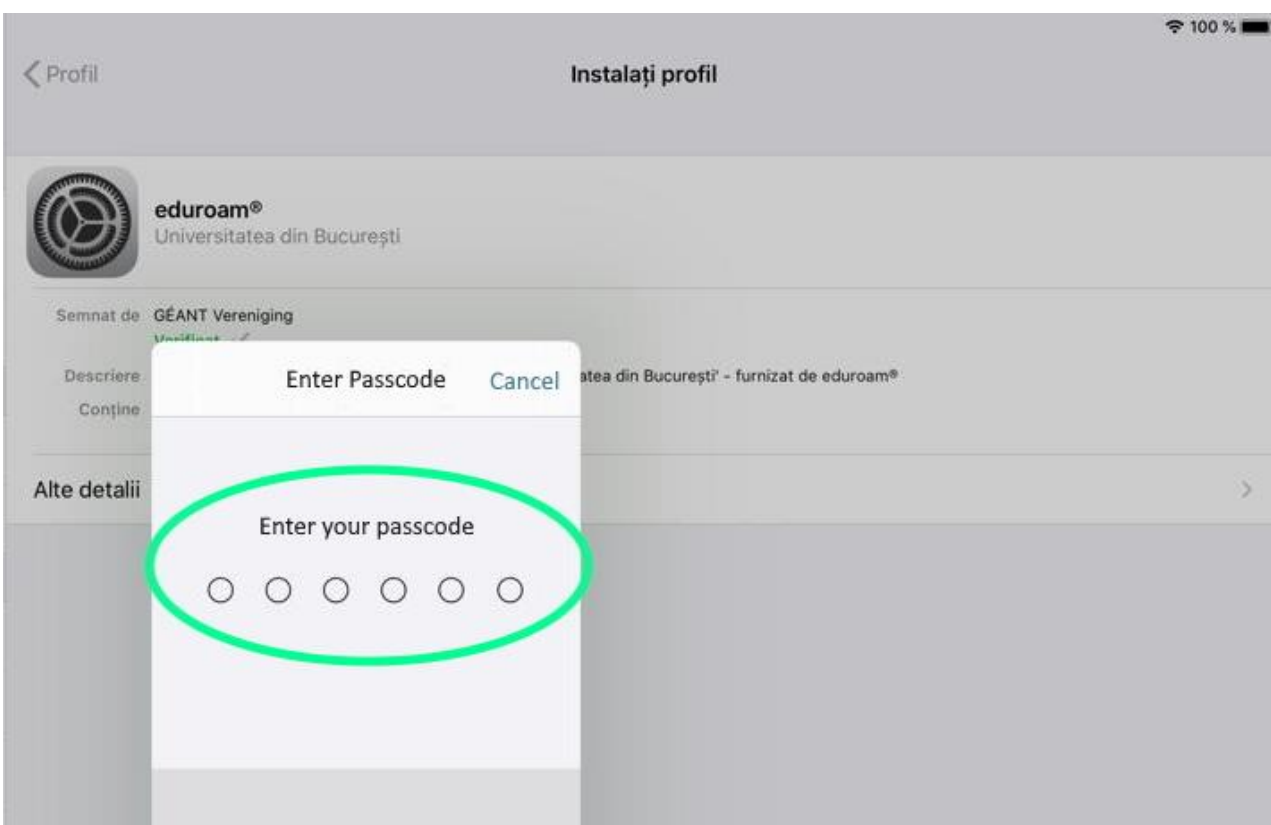
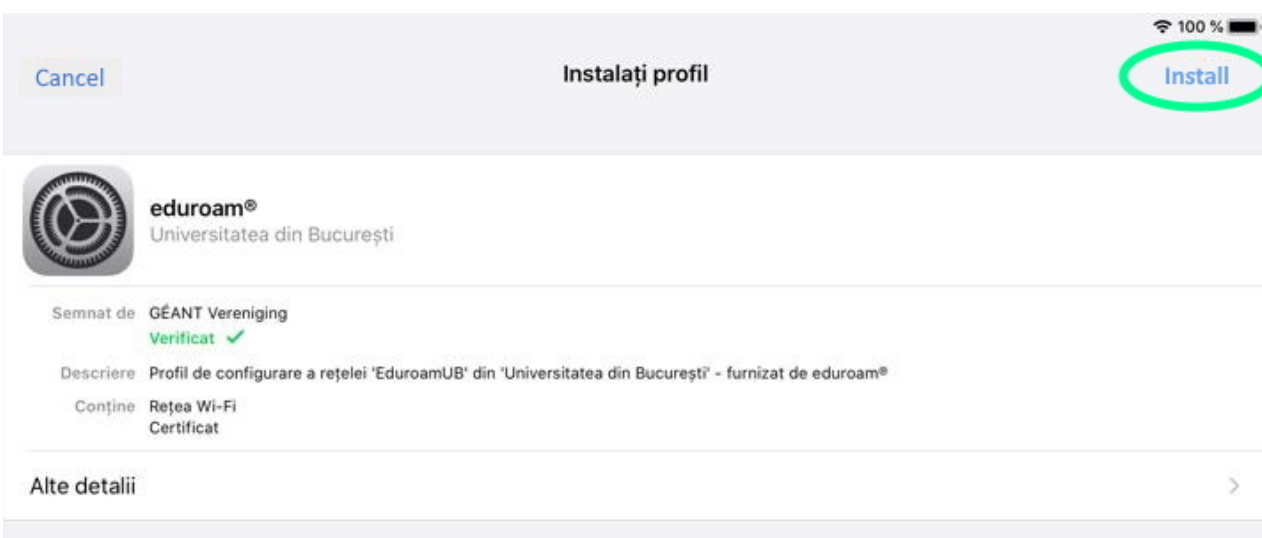
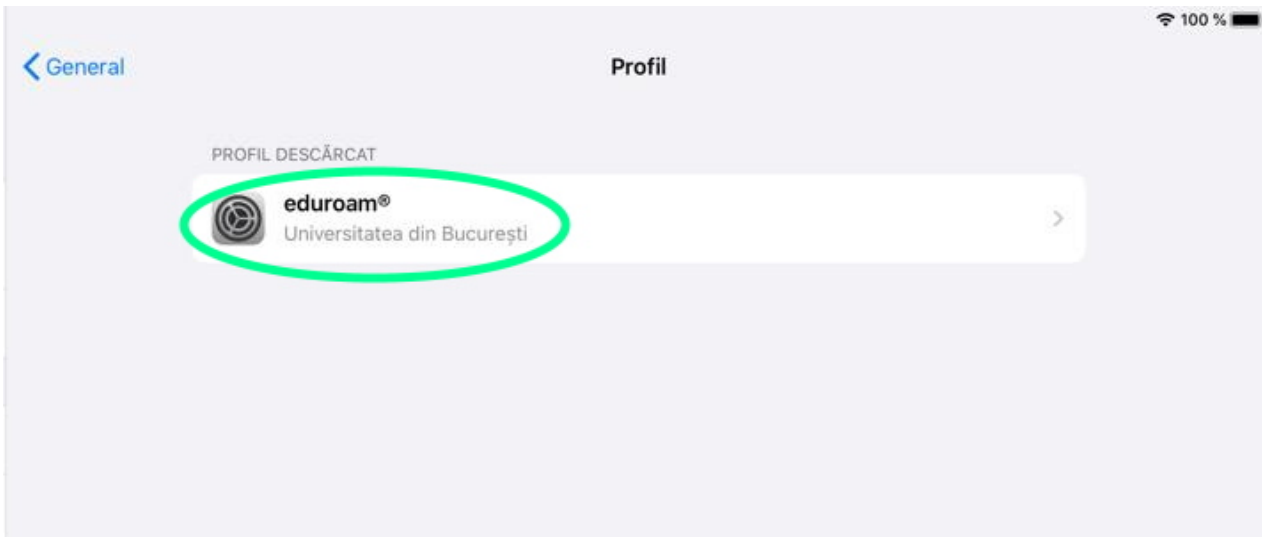
5. Press "Close" after it has been downloaded.



6. Go to "Settings / General"  and select "Profile".



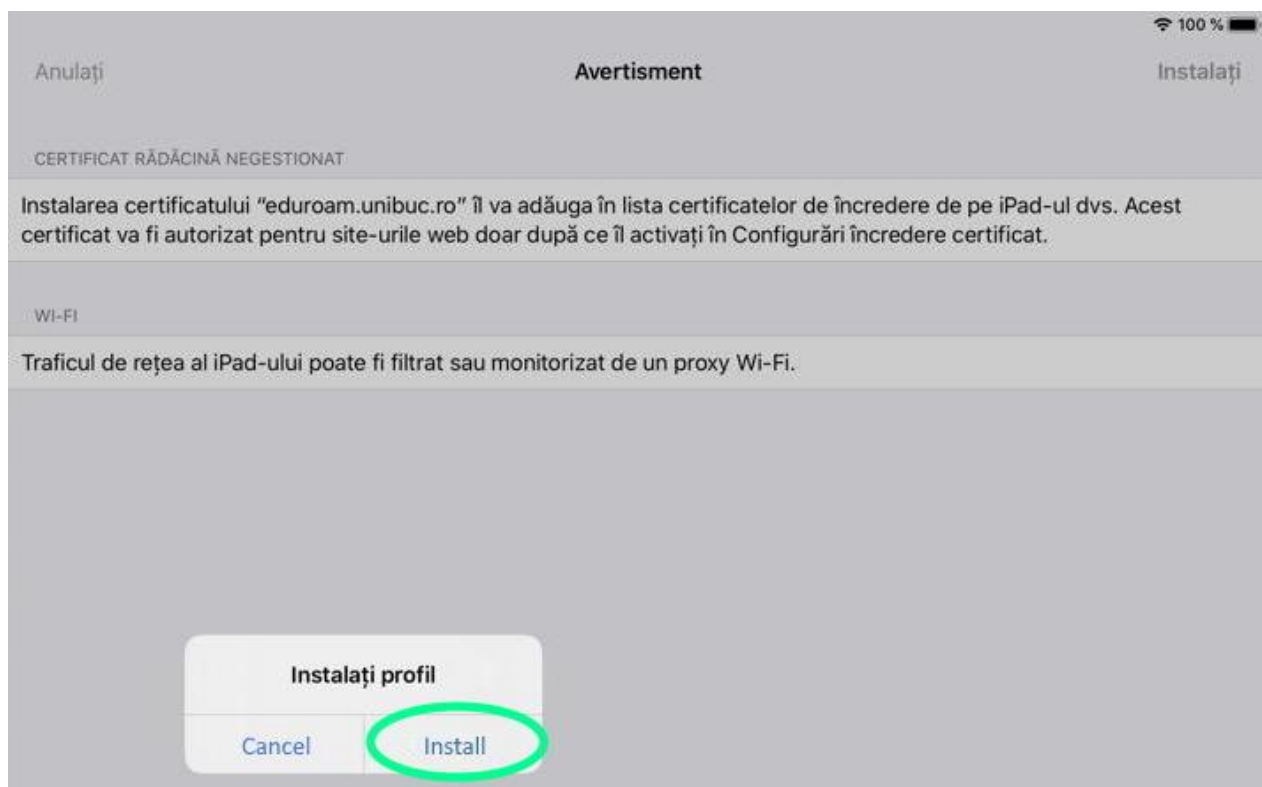
7. From the "Profil" menu, select the "eduroam@" profile and click on the "Install" button in the next window.). Accept this change by unlocking the protection method of your device .



In the following windows displayed you must accept the installation of the certificate "eduroam.unibuc.ro".

Confirm by pressing "Install".

**Acest pas se va solicita doar la prima instalare a profilului.*



In the next window you have to fill with the credentials of your UB MS365 account in order to complete the configuration of the "eduroam" profile. In the end you can log in .

This screenshot shows the 'Enter your username' step of the eduroam configuration process. At the top, there are 'Cancel' and 'Next' buttons. The 'Next' button is circled in green. Below the title bar, a green box highlights the instruction: 'INTRODUCEȚI NUMELE DVS. DE UTILIZATOR PENTRU REȚEAUA WI-FI "EDUROAM"'. The text 'MS365@unibuc.ro' is entered in the field below and is circled in yellow. At the bottom, it says 'Solicitat de profilul "eduroam®"'. The status bar at the top right shows 100% battery.

This screenshot shows the 'Password' step of the eduroam configuration process. At the top, there are 'Cancel' and 'Next' buttons. The 'Next' button is circled in green. Below the title bar, a green box highlights the instruction: 'INTRODUCEȚI PAROLA DVS. PENTRU REȚEAUA WI-FI "EDUROAM"'. The password field contains eight asterisks '*****' and is circled in yellow. At the bottom, it says 'Solicitat de profilul "eduroam®"'. The status bar at the top right shows 100% battery.

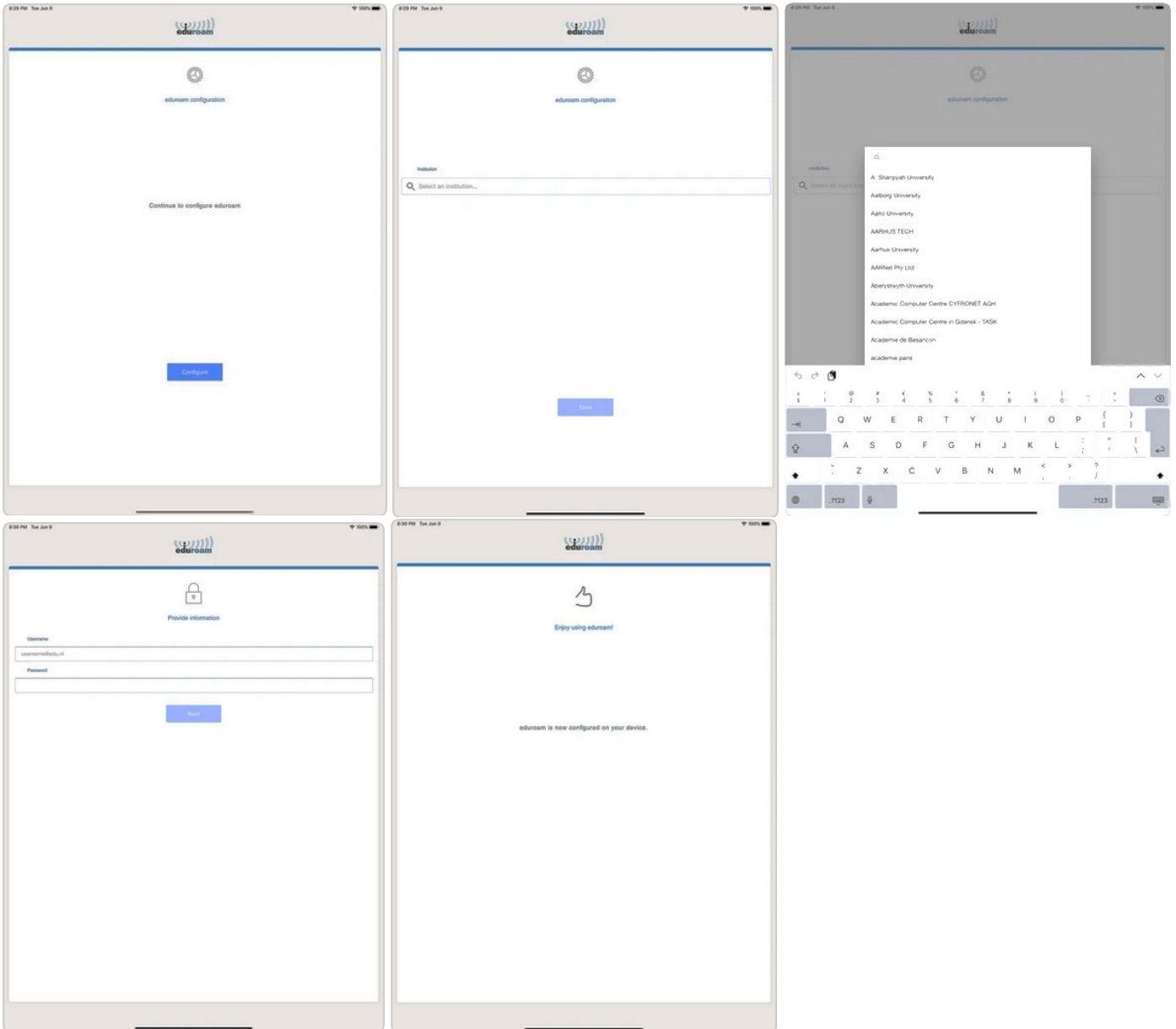


[Geteduroam](#)

For iPad devices you can use the “[geteduroam](#)” application by accessing App Store link:



Profile configuration will be done directly from the application interface. Search and select “**University of Bucharest**” and then fill your **MS365** account user details and then press “Next”.



After installation, the SSID "eduroam" will be found in the Wi-Fi list for which you can initiate "Connect"(*).

Now, the profile is set with the necessary parameters to be able to log in.

**Wi-Fi profile "eduroam" is shown only if there is a radio broadcast of this network in your area.*

To identify where there are areas with SSID broadcast "eduroam", you can access the following links:



[\(Global\)](#)



[\(Romania\)](#)

or you can install the "eduroam Companion" application from App Store link:



**Disconnect the network cable or turn off the mobile data connections (if applicable).*

**If you are reinstalling the kit this will modify the existing "eduroam" profile.*